

WARNING

To Prevent **SERIOUS INJURY** or **DEATH**:

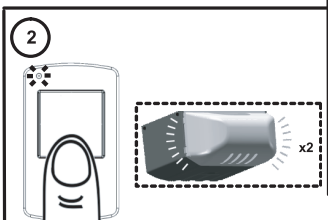
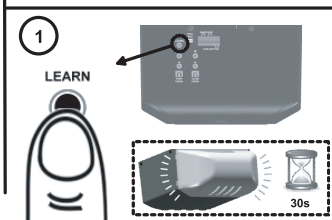
- Keep transmitter and battery out of reach of children.
- **NEVER** permit children to access the Push Button nor remote transmitters.
- Operate door **ONLY** when it is adjusted properly with no obstructions to door travel and is in clear sight.
- **ALWAYS** keep a moving door in sight until completely closed. **NO ONE** should cross the path of a moving door.



To reduce risk of fire, explosion or electric shock:

- **DO NOT** short circuit, recharge, disassemble or heat battery
- Replace with 23AE 12V batteries **ONLY**. Dispose of batteries properly.

Setting Transmitter



To Add Transmitter(s):

1. To add a transmitter, press/release "LEARN" button on the rear control panel, the courtesy light will glow with click*. The unit is ready to accept a transmitter in the coming 0-30 seconds.
2. Press/release any button on the transmitter within 0-30 seconds.
3. Courtesy light flashes twice indicating transmitter is stored in memory**.

Up to 20 transmitters (including wireless keypad codes) can be added to the unit by repeating the above procedures.

If more than 20 transmitters are stored, the previously stored one from the very beginning will be replaced, i.e. the 21st transmitter replaces the 1st stored one.

* If the courtesy light is already on it will flash once and stay steadily for 30 seconds.

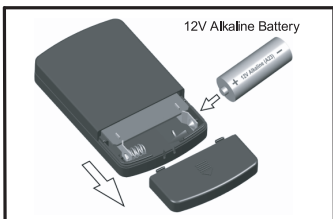
** If a transmitter is not accepted, the courtesy light will stay on for 30 seconds, flashes 4 times and then stay on for 2-1/2 minutes. Replace transmitter.

Removing **ALL** Transmitter(s):

To remove **ALL** transmitters from memory, press and hold the "LEARN" button above 5 seconds. The courtesy light will flash 7 times, indicating **ALL** transmitters have been removed from memory.



Model: 24130



Replacing Transmitter Battery:

When the battery of transmitter is low, dimmed indicator is observed. To replace battery, remove the battery cover from the transmitter, replace the battery with a 23AE 12V battery with direction shown in the figure above.

LIMITED WARRANTY AND LIMITATION OF LIABILITY

Decko Products warrants, to the first purchaser of this product, for the initial residence in which it is installed, to be free from defects in materials and or workmanship for a period of 1 YEAR from date of purchase. As the sole and exclusive remedy for a breach of this limited warranty, if the product is found by Decko Products to be defective, Decko Products, at its option, will repair or replace the product with an equivalent product if it is returned to the place of purchase or returned with proof of purchase post paid to

**Decko Products,
ATTN: Warranty Dept.,
2301 Traffic St. NE
Minneapolis, MN 55413**

**ANY DISASSEMBLY, MODIFICATION, OR ABUSE OF THIS PRODUCT
VOIDS THIS LIMITED WARRANTY.**

**DECKO DISCLAIMS ALL OTHER EXPRESS OR IMPLIED WARRANTIES,
INCLUDING WARRANTIES OF MERCHANTABILITY OR FITNESS FOR
A PARTICULAR PURPOSE.**

**THIS LIMITED WARRANTY DOES NOT COVER BATTERIES OR ANY
PROBLEMS WITH OR RELATED TO THE GARAGE DOOR OR GARAGE
DOOR HARDWARE. THIS INCLUDES BUT IS NOT LIMITED TO THE
DOOR SPRINGS, DOOR ROLLERS, DOOR ALIGNMENT OR DOOR
HINGES.**

**DECKO PRODUCTS SHALL NOT BE LIABLE FOR CONSEQUENTIAL
OR INCIDENTAL DAMAGES THAT ARISE IN CONNECTION WITH USE,
OR INABILITY TO USE THIS PRODUCT.**

Some states do not allow the exclusion or limitation of consequential or incidental damages, so the above limitation or exclusion may not apply to you. This limited warranty gives you specific legal rights, and you may also have other rights which vary from state to state.

Customer Service:
www.deckogdo.com
1-877-GDO-4402
1-877-436-4402

This device complies FCC Rules for HOME OR OFFICE USE.

Operation is subject to the following two conditions:

(1) this device may not cause harmful interference, and (2) this device must accept any interference received, including interference that may cause undesired operation.